

A large center pivot irrigation system is shown in a lush green field. The system consists of a long metal wheelline supported by multiple truss-like structures, with smaller riser pipes extending down to the ground. The field is vibrant green, and the background features rolling brown hills under a clear blue sky with a few wispy clouds. The overall scene is a typical agricultural landscape in a semi-arid region.

2023 WATER YEAR IMPACTS AND RESPONSE

KITTITAS RECLAMATION DISTRICT

Urban Eberhart, Secretary Manager



Winter Conservation Projects January/February 2023



"... in order to get through the summer, we need snowpack and water in the reservoirs. The reservoir capacity is at 48% right now. The system storage, as of (Tuesday) is at 84% of average."

(Feb. 16, 2023, Urban Eberhart in the Ellensburg Daily Record.)





Winter Conservation Projects March/April - 2023

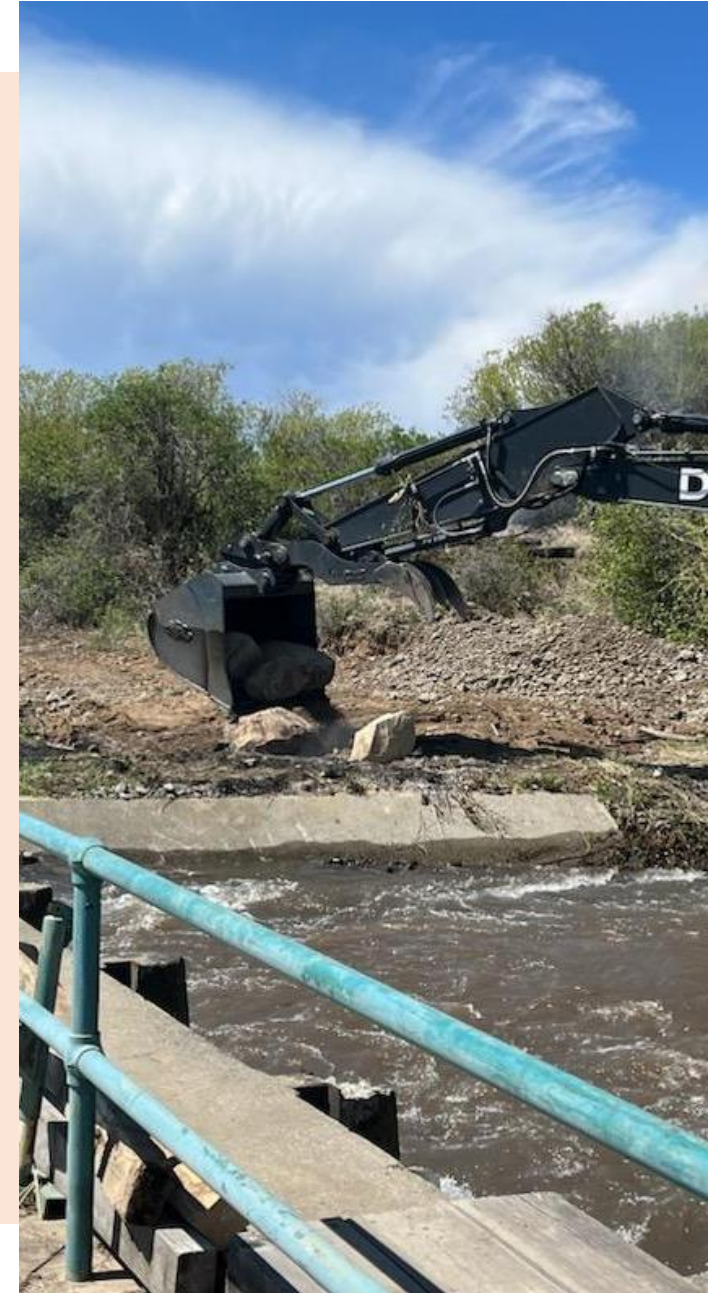
Irrigation Deliveries Began – April 2023

- In the April 1 forecast, the Bureau adopted a forecast of **82%** for the proratable irrigators.
- 5 reservoir capacity at 52%
- January 2023 was dry.
- Precipitation in February and some in March 2023.
- California was getting all of the storms.
- KRD allotment set at 2.0 cfs per acre.



Significant Snow Melt Uncaptured water - May 2023

- After a cold spring we saw the first significant snowmelt coming out of the Naneum basin causing the creek to run high, move out of its channel, and uncontrollably flow into the KRD canal system.
- The KRD infrastructure was inundated with uncontrolled flood water that was safely deposited into the Wipple Wasteway, resulting in less floodwater causing damage North of Ellensburg.
- While taking on the water that was flashing uncontrollably into it, the KRD canal sustained damage to the upgradient bank that needed emergency repairs.



June 1, 2023 – Storage Control and Proration Started.

WATER SUPPLY UPDATE: June 6, 2023

- US Bureau of Reclamation reported that Yakima Project, Prorating of the KRD water supply is estimated to be at **77%** of entitlement.
- Low Rainfall since October 1, 2022.
- Warm May 2023.
- Snow runoff usually split between May and June, May took most.
- Lost a lot of water in a short amount of time.





WATER SUPPLY UPDATE: June 15, 2023

- Prorationing of the KRD water supply has declined to **73%**.
- Thanks to recently constructed water conservation projects and the careful management of supply, the KRD landowner allotment for the 2023 year remains at 2 Cubic Feet Per Second (or 4 Acre Feet) per assessed acre. This is the same amount that was set in April of 2023.
- KRD will continue to attempt to operate at **1 California miner's inch per acre** from now until mid-August.

July 6, 2023 TWSA Update

- The runoff forecast has declined and indicates a reduced proration rate of **72%**.
- Continue to attempt to operate at **1 California miner's inch per acre** from now until early to mid-August.
- From there to the end of September, KR D plans to operate at significantly reduced flows.
- Based on the information from today, KR D does not anticipate any October 2023 water deliveries.

July 11, 2023 – KR D DECLARES DROUGHT EMERGENCY

- Reduced the KR D assessed land water allotment from 2.0 cubic feet per second (cfs) per acre to 1.75 cfs per acre.
- KR D plans to continue to attempt to deliver water at **1 California miners' inch** per acre, until August Board meeting.





WATER SUPPLY UPDATE, AUGUST 17, 2023

- The current KRD landowner allotment for the 2023 year remains at 1.75 Cubic Feet Per Second (or 3.5 acre-feet) per assessed acre.
- The KRD is now delivering at $\frac{3}{4}$ of a California miner's inch per acre.
- In September, we anticipate a further reduction to $\frac{1}{2}$ of a California miner's inch per acre to help meet our goal of a water shut off date of September 30, 2023.

WATER SUPPLY UPDATE, AUGUST 23, 2023

- The current KRD landowner allotment for the 2023 year remains at 1.75 Cubic Feet Per Second (or 3.5 acre-feet) per assessed acre.
- KRD is now delivering at $\frac{1}{2}$ of a California miner's inch per acre.
- KRD anticipates further reductions in September.





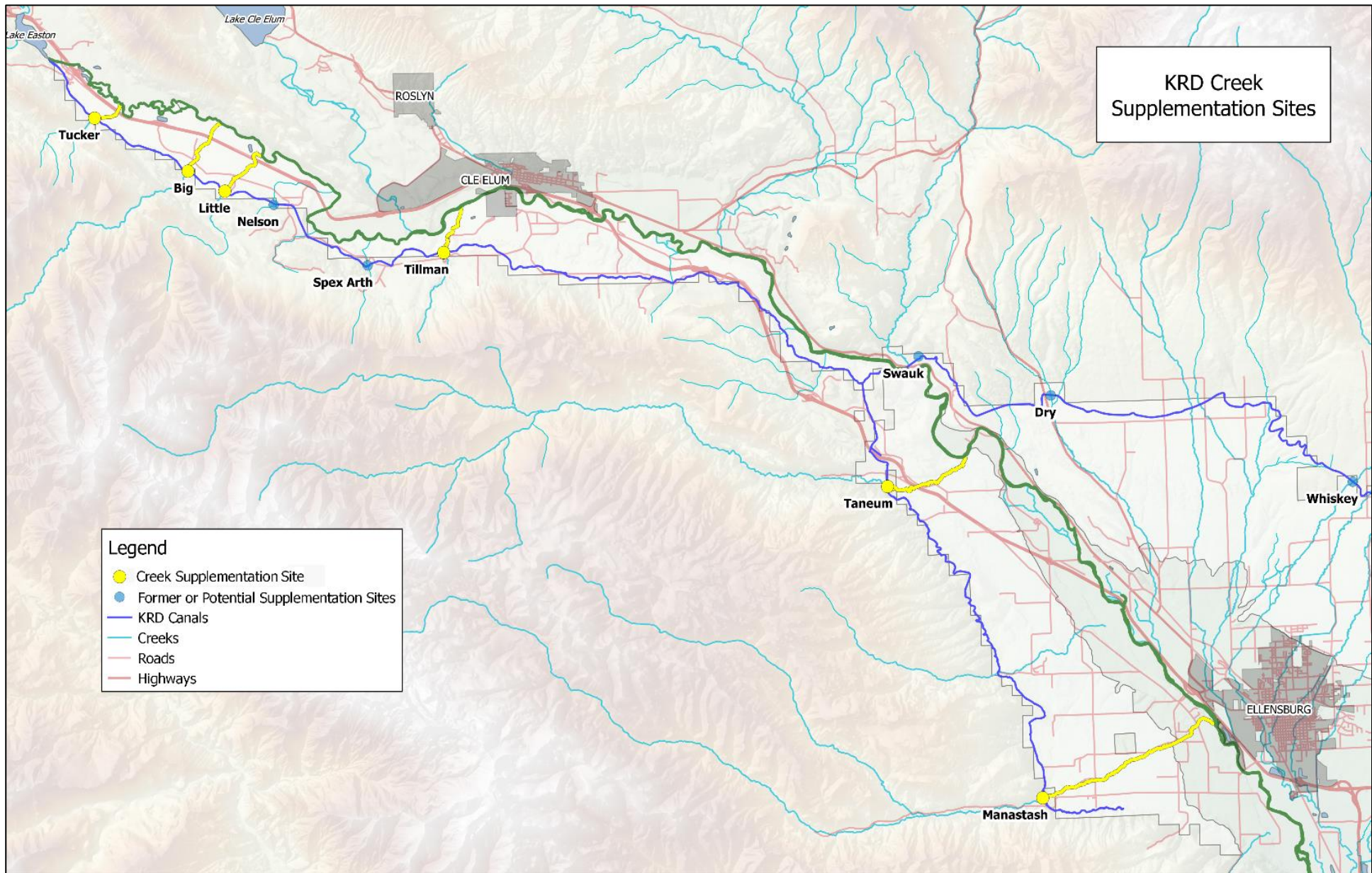
WATER SUPPLY UPDATE: September 1, 2023

- US Bureau of Reclamation - Yakima Project, Prorationing of the KRD water supply is estimated to be at **73%** of entitlement.

WATER SUPPLY UPDATE: OCTOBER 3, 2023

- Preliminary October estimate of **36%** of our October entitlement.
- Ultimately ended up with **54%** of October water.
- Tributary Supplementation is continuing past irrigation shut off date, October 15, 2023.





KRD's Tributary Supplementation/ Water Conservation



Manastash Creek at Serenity Lane, 2011



Manastash Creek at Serenity Lane, 2023

KRD's Tributary Supplementation/ Water Conservation

YAKIMA PROJECT HYDROMET SYSTEM STATUS REPORT

OCTOBER 31, 2023

US BUREAU OF RECLAMATION
YAKIMA PROJECT
SYSTEM STATUS AT 06:00, Tuesday, 31-Oct-2023

RESERVOIR	FOREBAY ELEVATION	CONTENT	TOTAL CAPACITY	PERCENT CAPACITY	RESERVOIR INFLOW	RESERVOIR RELEASES
	FB	AF	AF	%	CFS	CFS
Keechelus	2433.91	11213.	157800.	7.	50.	103.
Kachess	2200.24	20692.	239000.	9.	21.	120.
Cle Elum	2118.75	17530.	436900.	4.	124.	174.
Bumping	3395.80	4390.	33970.	13.	43.	88.
Rimrock	2832.75	34620.	198000.	17.	148.	73.
Clear Cr	3011.28					
TOTALS		88445.	1065400.	8.	387.	557.

IRRIGATION DIVERSIONS

	CFS	RIVER FLOWS	CFS
Kittitas	66.	Yakima River at Easton	200.
Roza	0.	Teanaway River at Forks	30.
Yakima-Tieton	0.	Yakima River near Horlick	601.
Wapato	0.	Yakima River near Umtanum	758.
Sunnyside	3.	Yakima River blw Roza Dam	NaN.
MAJOR USERS TOTAL	69.	Naches River nr. Clf'Dell	216.
		Tieton Rvr belw Cnl Hdws	78.
Westside	0.	Naches River near Naches	259.
Naches-Selah	0.	Yakima River near Parker	1193.
OTHERS ABOVE PARKER	0.	Yakima River near Prosser	730.

TOTAL ABOVE PARKER 265.

Kennewick 0.

OTHER CANAL DIVERSIONS

Wapatox	38.	
Roza at Headworks	16.	No Generation.
Chandler	1061.	Generating 7.4MW.

UNREGULATED TRIBUTARY & RETURN FLOW ABOVE PARKER NaN. CFS

OPERATIONAL COMMENTS: Storage is 29.0% of average (1991, 2020).

Precipitation at the five reservoirs for OCT 1 to date is 4.02 inches, or 24% of average and 23% of the months average. The Mountains will be mostly cloudy. Highs in the mid 40's. The valleys will be mostly cloudy. Highs in near 50 degrees. Winds light and variable becoming south 5 MPH. For the complete forecast go to <http://www.wrh.noaa.gov/pdt/>. Keechelus will decrease approx. 10. Kittitas Canal will run approx. 60 CFS for the tributary supplement. No other system changes expected. For further information contact the River Operator at 509-573-8112 or go to <https://www.usbr.gov/pn/hydromet/yakima>. River Operations meeting, at YFO and via Teams, Nov. 9, at 10:30 AM. Have a good day!!!!

(STATUS Updated - 31-Oct-2023 13:29:56)

**THANK YOU!
QUESTIONS?**

