

Guidelines



ONE VOICE AT A
TIME; RESPECT
WHAT OTHERS HAVE
TO SAY



ASK QUESTIONS IN
ADDITION TO
MAKING
STATEMENTS



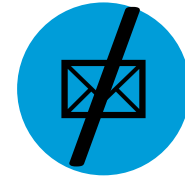
SHARE AIR TIME
EVENLY



CHALLENGE IDEAS,
NOT PEOPLE



SHARE THE
RESPONSIBILITY FOR
A GOOD MEETING

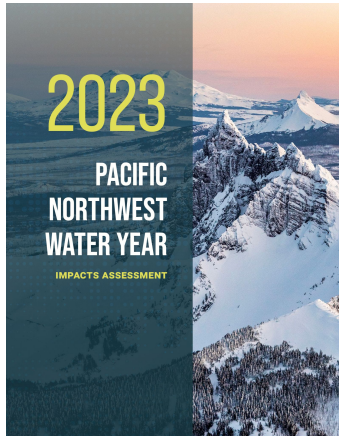
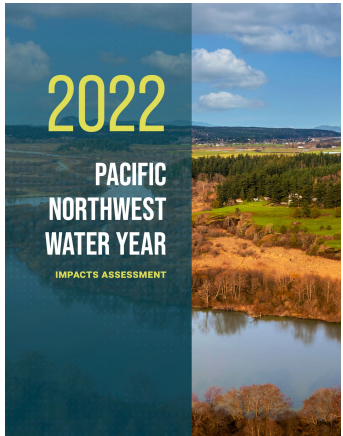
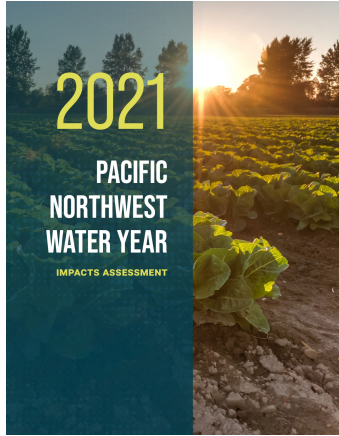
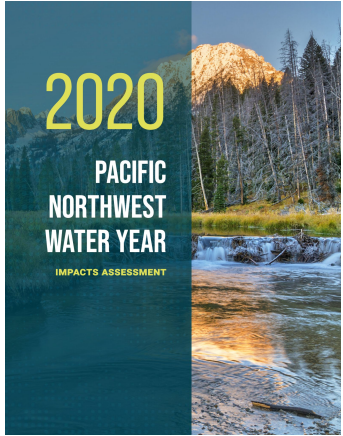


ENGAGE IN THE
MEETING; BE
ATTENTIVE

Breakout Group Discussion Questions

1. What impacts did you experience in water year 2024 due to abnormally dry or wet conditions?
2. How did you respond or change operations? Were there barriers to responding how you would have wanted?
3. Are there any sources of information or tools that would have been helpful in your decision making?
4. Are there any lessons from this year that will guide how you respond in the future?

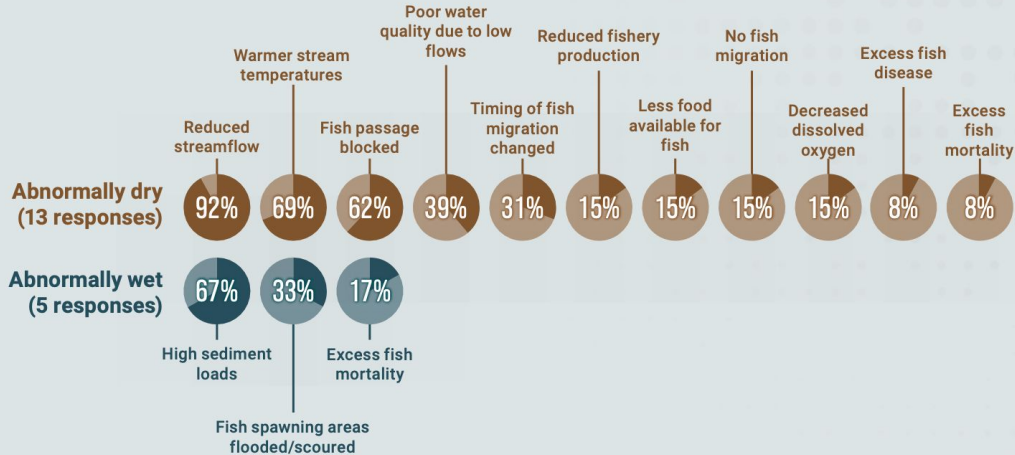
PNW Water Year Impacts Assessment



Purpose: To document water year impacts so that we can be better prepared for future change.

Example from 2023 Water Year Impacts Assessment

FISHERIES IMPACTS SURVEY



“ Early loss of snowpack and dry warm spring led to unusually low flows and dewatering of some steelhead redds in some Elwha [Washington] tributaries. ”

“ The high flows resulting from heat in May likely benefited smolt outmigration from the Yakima River [Washington]. High and turbid water would reduce predation and canal entrainment losses as fish out migrate to the Columbia River. ”